

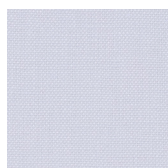
MY ROOTS IN BELGIUM

When summer comes in Belgium, while driving in the countryside you will feel like stopping and dive in those wonderful blue flowered fields you see allaround.

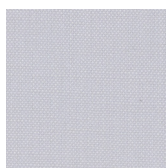
People should have had the same impulse for thousands of years. This is flax and flax is beauty in all its stages from the earth to your shirt, dress or your wall, when it becomes linen.

We used this precious, earth friendly natural fibers processed in Belgium to make this heavy panama wallcovering here in Italy. Brushing your finger tips on the surface you will feel the warm unmistakable texture. The choice is between ten earthy colors we accurately developed in exclusivity.

Belgian Linen



BLI001



BLI002



BLI003



BLI101



BLI102



BLI103



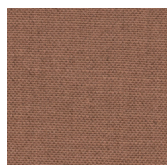
BLI104



BLI105



BLI106



BLI107



For additional information such as installation guide, seams visibility, press release and more images, please refer to our website GIARDINIWALL.COM or scan here.