



## FASHION & NATURE

Lace, the origin of which is contested by some European countries, is widely used in the fashion world since the sixteenth century. Lace was originally woven by hand only, and today is manufactured by lots of mills worldwide, primarily for the fashion industry. It also has a usage in interior textiles, but it's surely unusual to see it on wall surfaces. The pattern developed for ORGANIC is inspired by natural elements.

The lace weave creates an uneven effect which recalls a bit of a spider net or the look of the soil in some unspoiled dry environments. The fabric is laminated on a colored backing and then overprinted with water base inks to emphasize the different layers. Colors are matt and neutrals. This environmentally friendly wallcovering is fire retardant and stain repellent and seams are invisible.



ORG001



ORG002



ORG003



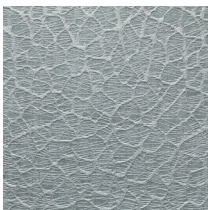
ORG006



ORG007



ORG008



ORG009



ORG010



For additional information such as installation guide, seams visibility, press release and more images, please refer to our website [GIARDINIWALL.COM](http://GIARDINIWALL.COM) or scan here.