



SUPERNATURAL

It might sound incompatible but still this was the challenge: to have the aspect of oxidized or rusted metal on a soft fabric surface. Using 100% silk was the right choice. The sheen of the fabric is perfect to imitate the metal gloss. The silver laminated base enhance the metallic aspect. The pattern is subtle but full of effects and nuances. The irregular horizontal slubs of the dupion gives an uneven characteristic emphasizing the overall look.

Among the seven colors you have oxidized copper, oxidized silver and rusted steel. Silk oxide is a fine elegant product easy to install. Mismatching installation with a random pattern repeat is possible if you want to magnify the aspect of metal used in architecture or for minimum leftovers. It's fire retardant and usable for hospitality.

Silk Oxide



OXI001



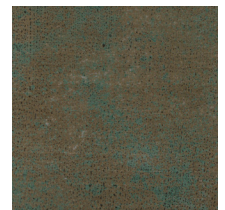
OXI002



OXI101



OXI102



OXI103



OXI104



OXI105



For additional information such as installation guide, seams visibility, press release and more images, please refer to our website GIARDINIWALL.COM or scan here.