



TEXTURES FROM NATURE

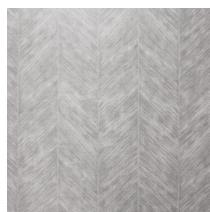
The floriferous spike, elegantly extended, it's the original inspiration for this refined design.

The subtle and sophisticated substrate on which this pattern is printed (Basmati is now an essential pattern in the Giardini range!) gives a distinguish personality to this wallcovering.

In between a stripe and a great textured all-over, this pattern is an

easy fit for virtually any contemporary interior setting. The double-layer textile ground, obtained with several production processes, gives additional depth to the texture. Seams are even more invisible because hidden by the pattern.

Available in a selection of intense tone-on-tone colours with a settled and elegant overlook, SPIGA is water resistant and fire retardant.



SPI001



SPI002



SPI003



SPI004



SPI005



SPI101



For additional information such as installation guide, seams visibility, press release and more images, please refer to our website GIARDINIWALL.COM or scan here.